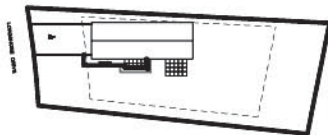


Brunner Residence

Ann Arbor, Michigan



Street Elevation



Site Plan



East Elevation

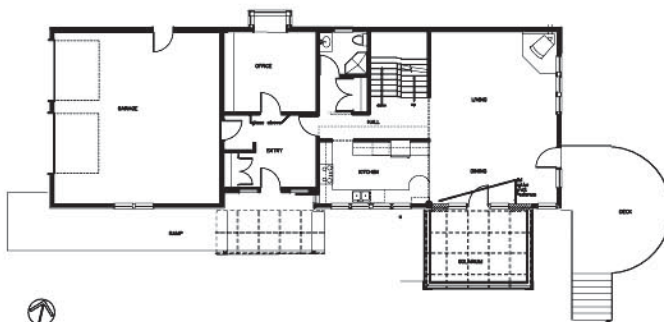
This home is positioned along the northern edge of an east-west lot to maximize its solar potential while creating more usable exterior space. A simple rectangular plan opens up to the sun. The two story galley kitchen windows extend from the counter to the second floor giving it wonderful daylight and expansive views to the outside. The solarium is a wonderful place to sit and warms the livingroom through the mass wall. The exterior finishes, were chosen to minimize maintenance.

The recessed second floor balconies give wonderful views and cozy places to sit.

A very well insulated envelope, radiant floor heating, passive solar glass and a solar water heater reduce the home's energy consumption to a very low amount.



First Floor Plan



Second Floor Plan

